

Cambridge Brass
P.O. Box 249
140 Orion Place
Cambridge, Ontario
Canada N1R 5V1
Tel: (519) 621-5520
Fax: (519) 621-8674
<http://www.cambridgebrass.com>

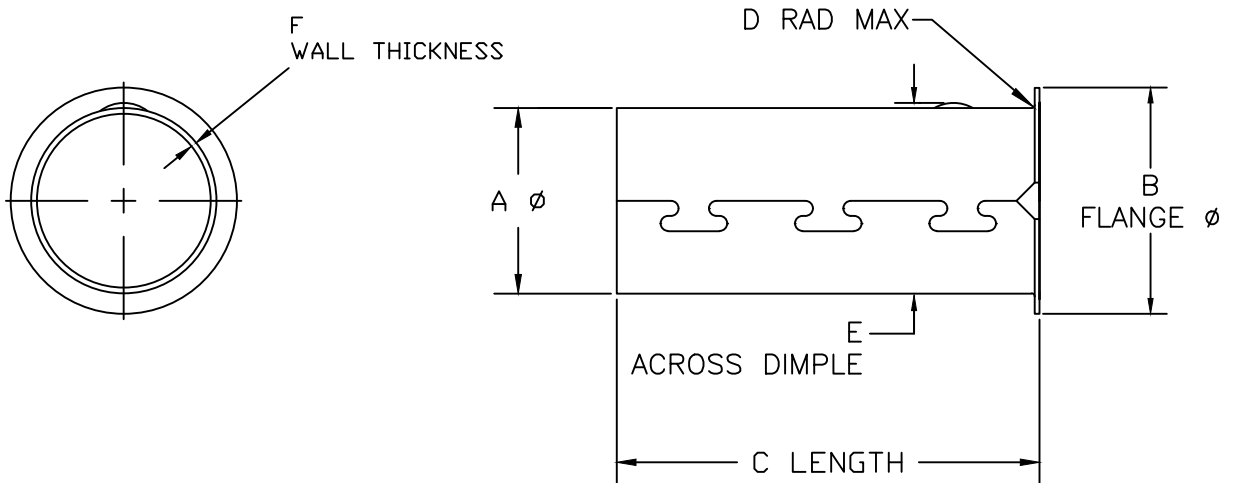


CAMBRIDGE
(SIZE) PE SDR9
INSERT 88-(#)

SERIES NO. 88

PE PIPE INSERT

— FOR USE WITH POLYTHEYLENE PIPE WITH IRON PIPE SIZE (IPS) OUTSIDE DIAMETER
AND WALL THICKNESS DIMENSION RATIO OF SDR 9 PER STANDARDS ASTM D3035 OR AWWA 901



PARTS AND MATERIAL:

1. INSERT MADE OF ANSI TYPE 304 STAINLESS STEEL

FEATURES:

- FOR USE WITH SDR9 PE PIPE
- SIZE AND "SDR9" STAMPED ON THE PART
- DIMPLES AND COLLAR TO POSITION AND RETAIN WITHIN PIPE

SIZE	PART #	A	B	C	D	E	F
3/4"	88-3	.770	.97	2.38	.02	.830	.027±.002
1"	88-4	.975	1.24	2.38	.02	1.050	.027±.002
1 1/4"	88-5	1.240	1.58	3.25	.02	1.315	.027±.002
1 1/2"	88-6	1.420	1.82	3.25	.02	1.500	.027±.002
2"	88-7	1.775	2.30	3.25	.02	1.860	.027±.002

Cambridge Brass considers the information in this submittal form to be correct at the time of publication. Item and option availability, including specifications, are subject to change without notice.

Submitted by: